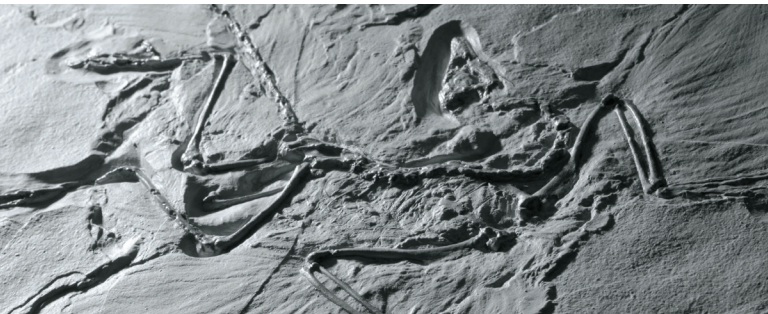




ARC'TERYX LEAF

POCKET GUIDE 2013

# LEGACY & PHILOSOPHY



Based in North Vancouver BC, Canada, LEAF is the Law Enforcement and Armed Forces division of Arc'teryx, a high performance outdoor equipment company known for leading technologies in alpinism, climbing and skiing. After twenty years of innovations, industry professionals identify Arc'teryx with the lightest, best performing and highest quality products possible.

Arc'teryx LEAF follows the same design, materials and construction values used in the outdoor world to produce operationally relevant, hard wearing, high performance equipment.

Relentless in the pursuit of design solutions, Arc'teryx maintains a single-minded approach to constructing the lightest, best performing, highest quality products. Arc'teryx LEAF designs are efficient, hard wearing, purposeful and lean. There are no compromises

# TECHNOLOGIES

## DESIGN

- 3D Patterning: Arc'teryx LEAF patterning is based on the body in motion. Articulation in the knees, elbows, seat and shoulders anticipates angles of action, creating significant room to move without constriction
- One-handed adjustments on all drawcords – hem, hood, waist, gloves, pack closures
- Laminated brims on hoods; molded zipper garages; laminated chin guards



## MATERIALS

- Premium fabric choices are a standard LEAF value for apparel and hard goods.
- WaterTight™ zippers, invented by Arc'teryx, have a smooth, snag-free surface
- All components are premium quality: cuff tabs, grommets, cord ends, zipper pulls

## CONSTRUCTION

- Lamination reduces overall weight, bulk and does not compromise waterproofness
- High stitch count increases strength, reduces seam allowances and overall weight
- Micro seam technology allows for tiny tape, increasing movement and breathability

## KEY PIECES



MultiCam®

## ALPHA JACKET

The original high performance GORE-TEX® hardshell adapted to LEAF environments. Fully waterproof, windproof and breathable during exertion, the Alpha Jacket is a hard wearing, harness and load carriage equipment compatible piece. StowHood™, sleeve security pockets, one-hand adjustable drawcords and concealed front zipper are LEAF details.





MultiCam®

## ALPHA PANT

High performance GORE-TEX® hardshell pant: Fully waterproof, windproof and breathable during exertion. The pared down design minimizes bulk and weight and stores compactly. Features full side zippers, built-in gaiters and reinforced insteps.



Wolf

## ATOM LT JACKET

Arc'teryx-developed Coreloft™ insulation delivers great warmth for very little weight. Side panels of lighter, more breathable fabric under the arms help regulate temperature and stretch with the torso. The outer fabric is weather-resistant, enabling the Atom LT Jacket to function as a cold weather layer or as an outer layer.



Wolf

## NAGA HOODY

The Naga Hoody brings durable fleece comfort into an insulation piece that regulates temperature and can withstand prolonged use. The slim fitting hood fits under headgear, or sits cleanly on the back of the neck. Seamless torso construction reduces friction points.



Wolf

## DRAC JACKET

Breathable, weather-resistant and warm, the Drac Jacket is a visually tactical mid weight softshell. High performance, snag-resistant, durable technical fabric provides weather protection, temperature regulation and room for layers in a versatile BDU alternative.



Wolf

## DRAC PANT

Combat-ready, in a weather-shedding stretch textile, the Drac Pant provides high performance mobility with a moderate degree of warmth. The ten pocket design holds all equipment; webbing reinforced knees outlast fabric alternatives.



WATERTIGHT™ ZIPPERS



GORE-TEX® WATERPROOF/BREATHABLE FABRICS



QUICK RELEASE BUCKLES



ONE HANDED DRAWCORD HOOD ADJUSTMENT

## NEW PIECES



Khard 30 - Wolf



Khard 45 - Crocodile

## KHARD PACKS 30L & 45L

Exposure, volatile weather and harsh terrain has lead Arc'teryx to develop efficient, streamlined packs. Adopting these systems into LEAF applications, the new Khard 30 & 45 assault packs are fully padded, single compartment bags for medics, breachers or communications specialists.





Khyber 50 - MultiCam®



Khyber 80 - Wolf

## KHYBER PACKS 50L & 80L

Based on the principles of fast and light backcountry travel, LEAF brings forward the Khyber, a streamlined patrol pack. Wide and slim in profile, equipped with a suspension system evolved from extensive alpine experience, the Khyber has long range hauling comfort.



Wolf

## MINOTAUR JACKET

The Minotaur Jacket is a lightweight, fully windproof shell. Lightly insulated by a brushed fleece backer, the fabric has an added degree of stretch and readily sheds all forms of moisture. WINDSTOPPER® is a breathable membrane, which allows the Minotaur Jacket to breathe during exertion, controlling moisture and regulating body temperature.



Crocodile

## E220 RIGGER'S HARNESS

Packaged as an emergency set-up, the Rigger's Harness combines the Rigger's Belt with a mesh sling that folds into two leg loops and attaches to the belt to form an emergency harness. Warp Strength™ Technology in the Rigger's Belt uniformly spreads load and evenly distributes weight and pressure. Certification safety ratings: EN 12277 and EN 358. Fits LEAF Sphinx, Gryphon, Talos and Drac Pants.



MultiCam®

## TALOS LT HALFSHELL

Combat shirt with full gussets under the arms that keep the hem stable during overhead motion. Articulated shoulders and elbows give an unrestricted range of motion, with strategically placed seams to limit points of friction. Integrated collar and opening has flat front to prevent debris entry, retain shape and increase comfort.



MultiCam®

## MATTOCK LT DRYSOCK

Waterproof/breathable GORE-TEX® fabric as footwear delivers excellent moisture management and extends the functionality of a single pair of footwear. The Drysock is an integrated sock and gaiter in one piece that draws moisture away from the skin, dries quickly and is extremely durable. For extended travel over or exposure to wet terrain.

# LAYERING

The key to any clothing system is efficient layering. Choose layers according to the expected conditions and anticipated level of output.

## BASE LAYERS

Transfer moisture from the body, regulating core temperature and comfort.

## COMBAT LAYERS

The primary clothing of engagement, usually consisting of a combat shirt and combat pant, that works with insulation layers, hardshells, cold weather and personal protective equipment.

## MID LAYERS

Breathable and provide warmth, plus moderate weather protection.

## HARDSHELLS

Waterproof, windproof, fully protective outer layers that breathe during exertion.

## WINDSHELLS

Lightweight, breathable, fully windproof outer layers with some weather protection.

BASE LAYER

COMBAT LAYER

MID LAYER

HARDSHELL  
OR WINDSHELL





## ARC'TERYX LEAF

Suite 100 – 2155 Dollarton Highway  
North Vancouver BC Canada V7H 3B2  
[leaf@arcteryx.com](mailto:leaf@arcteryx.com) | [leaf.arcteryx.com](http://leaf.arcteryx.com)

